

# Neighbourhood Services and Housing Scrutiny Commissions

## Draft Leicester Domestic Abuse Safe Accommodation Strategy 2022-2025

December 2021

# Background/context

## Domestic Abuse Act 2021

Aims to:

- Raise awareness and understanding about domestic abuse
- Provide protection for victims
- Bring perpetrators to justice
- Strengthen support by statutory agencies

# Background/context

## Domestic Abuse Act 2021

- Part 4 – local authority support

“Each local authority in England must:

- (a) assess the need for **accommodation-based support** in its area,
- (b) prepare and publish a **strategy** for the provision of such support, and
- (c) monitor and evaluate the effectiveness of the strategy.”

# Planning Leicester's Domestic Abuse Safe Accommodation Strategy

- Establishing a locality partnership board
- Needs assessment including review of existing documentation and provision
- Contact with 'most similar group' of Community Safety Partnerships
- Consultation period (26<sup>th</sup> October – 30<sup>th</sup> November)
- Adjustment in line with feedback
- Publication and implementation

# Strategic Objectives

- To establish the Leicester Domestic Abuse Locality Partnership Board
- To commission the appropriate services
- To establish and sustain an effective performance management structure for delivery of the domestic abuse safe accommodation strategy

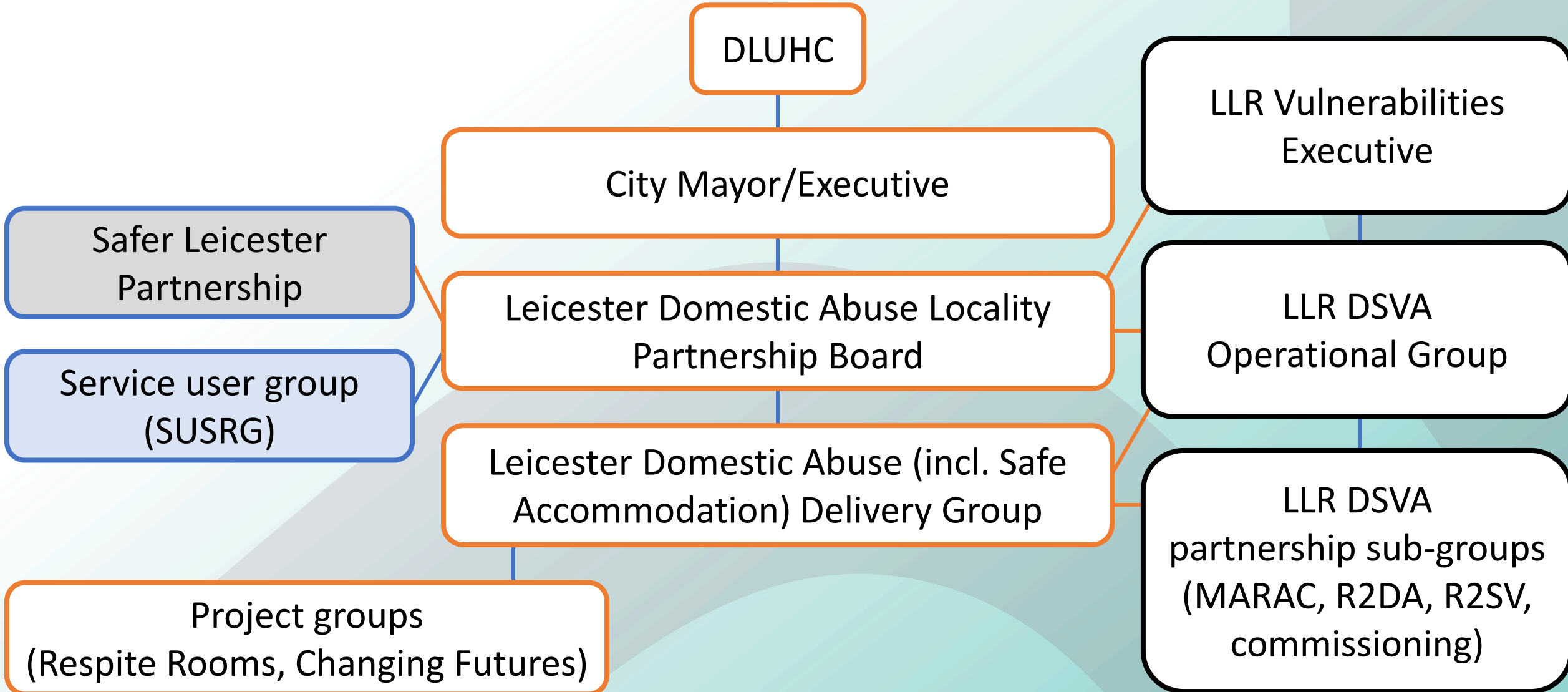
# Themed Priorities

1. Establish the Leicester Domestic Abuse Locality Partnership Board
2. Improve our understanding of need in the city, and barriers to meeting those needs
3. Develop and support the workforce
4. Expand the accessibility and suitability of the safe accommodation available in Leicester

# Leicester Domestic Abuse Locality Partnership Board

- Requirement of the Domestic Abuse Act 2021
- Established to advise and support the council in the delivery of its functions
- Representatives of:
  - Leicester City Council
  - Victims of domestic abuse
  - Children of victims
  - VCS specialist providers
  - Health care services
  - Police/criminal justice

# Governance & Reporting





# Resources

## Income Summary

- £857,364 for 2021-2022
- £15,025 allocated to fulfilling new homelessness duty in 2021-2022
- £334,956 for one-year Respite Rooms Trial Programme Oct 2021 – Sept 2022
- £? From DLUHC for 2022-23

## Spend Summary

- BME specialist refuge, second stage, counselling, immigration support
- Substance use domestic abuse recovery worker
- Young people safe accommodation project
- Additional capacity within the team to deliver the objectives
- Further community engagement with specific groups highlighted in EIA
- Trauma informed domestic abuse accommodation pilot
- Additional dispersed accommodation, referral management and improved data picture

# Timeline

- Publication of draft strategy – October 2021
- Update of draft strategy – December 2021
- Publication of final strategy – 5<sup>th</sup> January 2022
- Delivery of strategy – ongoing
  - Leicester Domestic Abuse Locality Partnership Board
  - Delivery Group

# Contacts

Daxa Pancholi

Head of Community Safety & Protection

Stephanie McBurney

Team Manager (Domestic & Sexual Violence)

Katy Edge

Domestic & Sexual Abuse Development Officer

[dsvteam@leicester.gov.uk](mailto:dsvteam@leicester.gov.uk)